

**PROPRIETARY NOTE**

THIS SPECIFICATION IS THE PROPERTY OF FANNAL AND SHALL NOT BE REPRODUCED OR COPIED WITHOUT THE WRITTEN PERMISSION OF FANNAL AND MUST BE RETURNED TO FANNAL UPON ITS REQUEST



SPEC. NUMBER  
AM-0399001A

PRODUCT GROUP  
TFT- LCM

REV.  
V0

ISSUE DATE  
2023-04-28

PAGE  
1 OF 26

**FN0399D001A**

**Product Specification Rev.V0**

BUYER	
SUPPLIER	FANNAL Electronics CO., LTD
FG-Code	FN0399D001A

- Preliminary Specification
- Approval Specification

ITEM	BUYER SIGNATURE	DATE
Quality	_____	_____
R&D	_____	_____
Approved	_____	_____

ITEM	SUPPLIER SIGNATURE	DATE
Prepared	<u>DONG</u>	<u>2023-04-28</u>
Reviewed	<u>XIONG</u>	<u>2023-04-28</u>
Approved	<u>JACK</u>	<u>2023-04-28</u>

**PRODUCT GROUP**

**REV**

**ISSUE DATE**



TFT- LCM PRODUCT

V0

2023-04-28

**SPEC. NUMBER**

**SPEC . TITLE**

**PAGE**

AM-0399001A

FN0399D001A Product Specification

2 OF 26

## REVISION HISTORY

REV.	Page.	DESCRIPTION OF CHANGES	DATE	PREPARED
V0		Initial Release	2023-04-28	JACK

**PRODUCT GROUP**

**REV**

**ISSUE DATE**



TFT- LCM PRODUCT

V0

2023-04-28

**SPEC. NUMBER**

**SPEC. TITLE**

**PAGE**

AM-0399001A

FN0399D001A Product Specification

3 OF 26

## Contents

<b>No.</b>	<b>Items</b>	<b>Page</b>
1.0	General Description	4
2.0	Mechanical Drawing	5
3.0	Absolute Maximum Ratings	6
4.0	Electrical Specifications	7
5.0	Interface Description	8
6.0	Optical Specifications	16
7.0	Reliability Test	18
8.0	Precautions	19
9.0	Packing Information	23
10.0	Visual Inspection Criteria For All Customers	24

**PRODUCT GROUP**

REV

ISSUE DATE



TFT- LCM PRODUCT

V0

2023-04-28

SPEC. NUMBER

SPEC. TITLE

PAGE

AM-0399001A

FN0399D001A Product Specification

4 OF 26

## 1.0 General Description

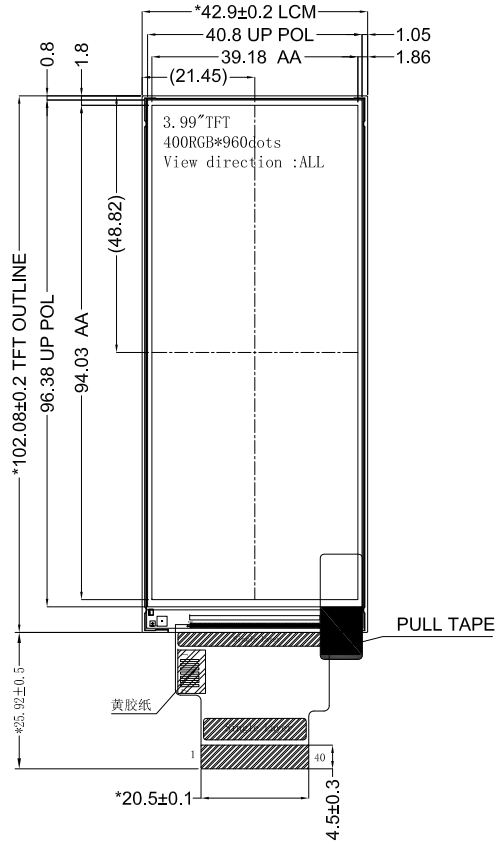
### 1.1 Application

- |  |  |  |
|--|--|--|
| <input checked="" type="checkbox"/> Industrial | <input type="checkbox"/> Fitness equipment   | <input checked="" type="checkbox"/> POS                |
| <input type="checkbox"/> Automotive            | <input type="checkbox"/> Rail traffic        | <input checked="" type="checkbox"/> Digital & Consumer |
| <input checked="" type="checkbox"/> Medical    | <input type="checkbox"/> Military-industrial | <input type="checkbox"/> Outdoor highlight             |

### 1.2 General Specification

Parameter	Specification	Unit
LCD size	3.99 (Diagonal)	inch
Resolution Ratio	400(H)×960(V)	pixels
Pixel Pitch	0.09795x0.09795(V)	mm
Active Area	39.18(H)×94.032(V)	mm
Module Size	42.9(W)×102.08(H)×2.15(D)	mm
Display Mode	Normally Black	
Interface	RGB/SPI	
Pixel arrangement	RGB-Stripe	
View Direction	ALL	
Power Supply	2.8	V
Power Consumption	0.7	W
Weight	20	g
Luminance	350 (TYP.)	cd/m <sup>2</sup>
Driver IC	ST7701SN	

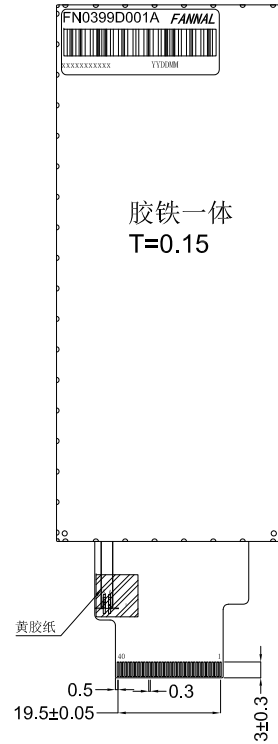
VER.	SYMBOL	AMENDMENT	SIGN	DATE
A		First issue	LCF	2023-04-17



TOP VIEW



SIDE VIEW



BOTTOM VIEW

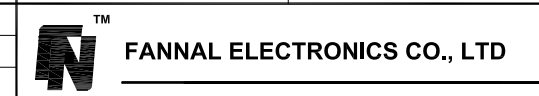
LED CIRCUIT DIAGRAM:  
 BACKLIGHT:8S1P=8 CHIP-WHITE LED  
 IF=20mA ; VF=22.4~27.2V

A-

SIZE	3.99 Inch	Interface	RGB 18bit+SPI	PIN	SYMBOL	PIN	SYMBOL	PIN	SYMBOL	PIN	SYMBOL	PIN	SYMBOL
Resolution Ratio	400x960	Power Supply	2.8V	1	LEDA	13	DE	25	DB9	37	TP_SCL	1	GND
LCD Type	<input checked="" type="checkbox"/> Transmissive <input type="checkbox"/> Transflective <input type="checkbox"/> Reflective	Connection Mode	<input checked="" type="checkbox"/> FPC Plug-in <input type="checkbox"/> FPC Soldering <input type="checkbox"/> Connector	2	LEDK1	14	VSYSN	26	DB10	38	TP_RESET	2	TP_INT
Display Mode	<input checked="" type="checkbox"/> Normally Black <input type="checkbox"/> Normally White	Driver IC	ST7701SN	3	LEDK2	15	HSYN	27	DB11	39	TP_VCI	3	TP_SDA
Display Direction	<input type="checkbox"/> 6 <input type="checkbox"/> 12 <input type="checkbox"/> 3 <input type="checkbox"/> 9 <input checked="" type="checkbox"/> Free	Operation Temperature	-20~+70	4	GND	16	DB0	28	DB12	40	GND	4	TP_SCL
Contrast Ratio	1500:1	Storage Temperature	-30~+80	5	VCI	17	DB1	29	DB13		5	TP_RESET	
Luminance	350(Typ.) 300(Min.)	Environmental Requirements	<input checked="" type="checkbox"/> RoHS-2.0 <input type="checkbox"/> REACH	6	RESET	18	DB2	30	DB14		6	TP_VCI	
Uniformity	80% Min	Unmarked Tolerance	±0.2mm	7	NC	19	DB3	31	DB15		7	GND	
				8	NC	20	DB4	32	DB16				
				9	SDA	21	DB5	33	DB17				
				10	SCL	22	DB6	34	GND				
				11	CS	23	DB7	35	TP_INT				
				12	PCLK	24	DB8	36	TP_SDA				

DRAWN	LCF
CHECKED	DDNG
APPROVED	
CSR APPROVED	
Customer No:	
SHEET	1 OF 1

TITLE	Drawing NO: FN0399D001A
MODULE SPEC.	Project No:



**PRODUCT GROUP**

REV

ISSUE DATE



TFT- LCM PRODUCT

V0

2023-04-28

SPEC. NUMBER

SPEC. TITLE

PAGE

AM-0399001A

FN0399D001A Product Specification

6 OF 26

### 3.0 ABSOLUTE MAXIMUM RATINGS

The followings are maximum values which, if exceed, may cause faulty operation or damage to the unit.

Parameter	Symbol	Min.	Max.	Unit
Supply Voltage	VDD	-0.3	4.6	V
Digital interface supple Voltage	VDDI	-0.3	4.6	V
Operating Temperature	T <sub>OP</sub>	-20	70	°C
Storage Temperature	T <sub>ST</sub>	-30	80	°C
Operating Ambient Humidity	H <sub>OP</sub>	10	60°C 90%RH	RH
Storage Humidity	H <sub>ST</sub>	10	60°C 90%RH	RH

NOTE: If the absolute maximum rating of even is one of the above parameters is exceeded even momentarily, the quality of the product may be degraded. Absolute maximum ratings, therefore, specify the values exceeding which the product may be physically damaged. Be sure to use the product within the range of the absolute maximum ratings.

## 4.0 ELECTRICAL SPECIFICATIONS

### 4.1 TFT LCM Module

[Ta =25 ± 2 °C]

Parameter	Symbol	Min.	Typ.	Max.	Unit
Supply Voltage	VDD	2.5	2.8	3.6	V
Digital interface supply Voltage	VDDI	1.65	1.8	3.3	V
Normal mode Current consumption	IDD	-	-	50	mA
Level input voltage	V <sub>IH</sub>	0.7VDDI		VDDI	V
	V <sub>IL</sub>	GND		0.3VDDI	V
Level output voltage	V <sub>OH</sub>	0.8VDDI		VDDI	V
	V <sub>OL</sub>	GND		0.2VDDI	V

### 4.2 Backlight Driving Conditions

[Ta =25 ± 2 °C]

Parameter	Symbol	Min.	Typ.	Max.	Unit	Notes
Forward Current Voltage	V <sub>F</sub>	22.4	24.8	27.2	V	Note 1
Forward Current	I <sub>f</sub>	-	20	-	mA	
Backlight Power Consumption	W <sub>bl</sub>	-	0.496	-	W	
LED Life Time	-	30000	-	-	Hrs	Note 2

Note1: Under LCM operating, the stable forward current should be inputted. And forward voltage is for reference only.

Note2: Optical performance should be evaluated at Ta=25°C. if LED is driven by high current, high ambient temperature & Humidity condition. The life time of LED will be reduced. Operating life means brightness goes down to 50% initial brightness. Typical operating life time is estimated data.

**PRODUCT GROUP**

REV

ISSUE DATE



TFT- LCM PRODUCT

V0

2023-04-28

SPEC. NUMBER

SPEC. TITLE

PAGE

AM-0399001A

FN0399D001A Product Specification

8 OF 26

**5.0 Interface Description**

Connector Name/Designation	Interface Connector/Interface Card
Type Part Number	FPC 40PIN 0.5Pitch
Mating Housing Part Number	FH28-40S-0.5SH

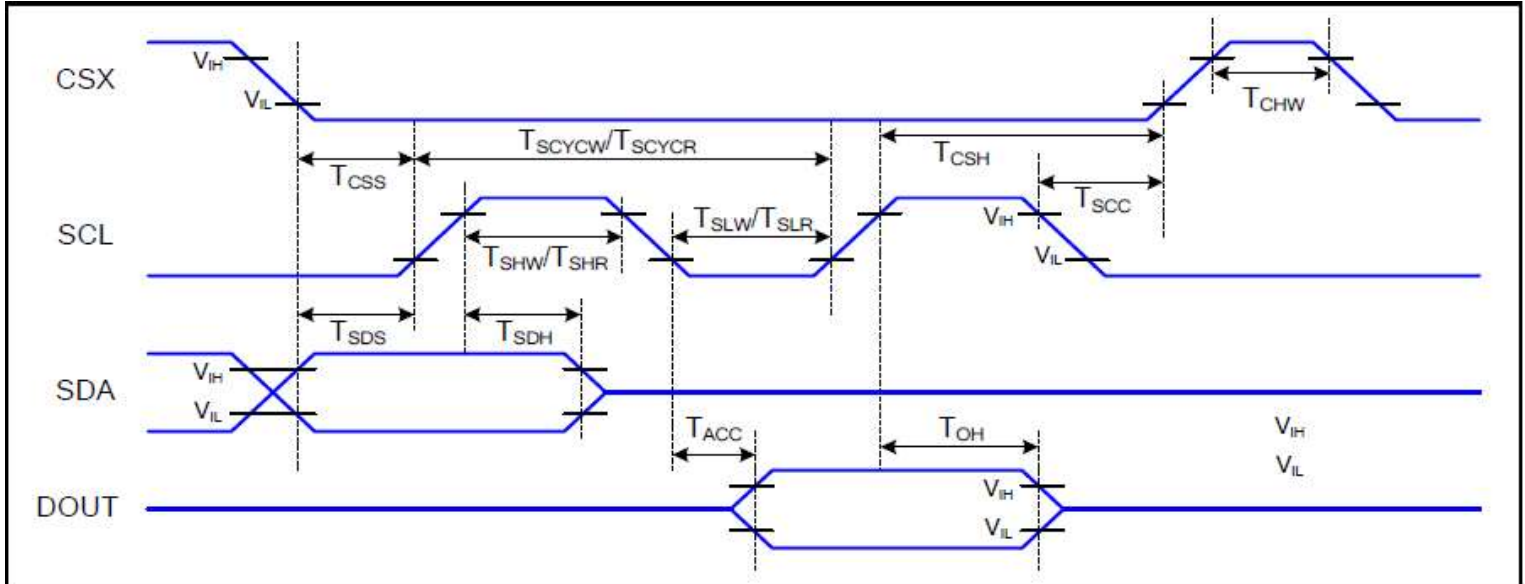
**5.1 Pin assignment for LCM module**

Pin No.	Symbol	Description	Note.
1	LEDA	LED Anode.	
2	LEDK1	LED Cathode.	
3	LEDK2	LED Cathode.	
4	GND	Power Ground.	
5	VCI	Power Supply.	
6	RESET	Reset Signal, Active Low.	
7-8	NC	No Connection.	
9	SDA	SPI Data signal.	
10	SCL	SPI Clock signal.	
11	CS	SPI Chip select signal.	
12	PCLK	RGB dot clock signal.	
13	DE	RGB data enable signal.	
14	VSYNC	RGB frame synchronizing signal.	
15	HSYNC	RGB line synchronizing signal.	
16-33	DB0-DB17	RGB data signal: DB0:Blue LSB--DB5:Blue MSB; DB6:Green LSB--DB11:Green MSB; DB12:Red LSB--DB17:Red MSB.	
34	GND	Power Ground.	
35	TP_INT	Touch Interrupt, Not connection.	
36	TP_SDA	Touch IIC Data signal, Not connection.	
37	TP_SCL	Touch IIC Clock signal, Not connection.	
38	TP_RESET	Touch Reset signal, Not connection.	
39	TP_VCI	Touch Power supply, Not connection.	
40	GND	Power Ground.	



## 5.2 AC Characteristic

### 5.2.1 Serial Interface Characteristics (3-line serial):

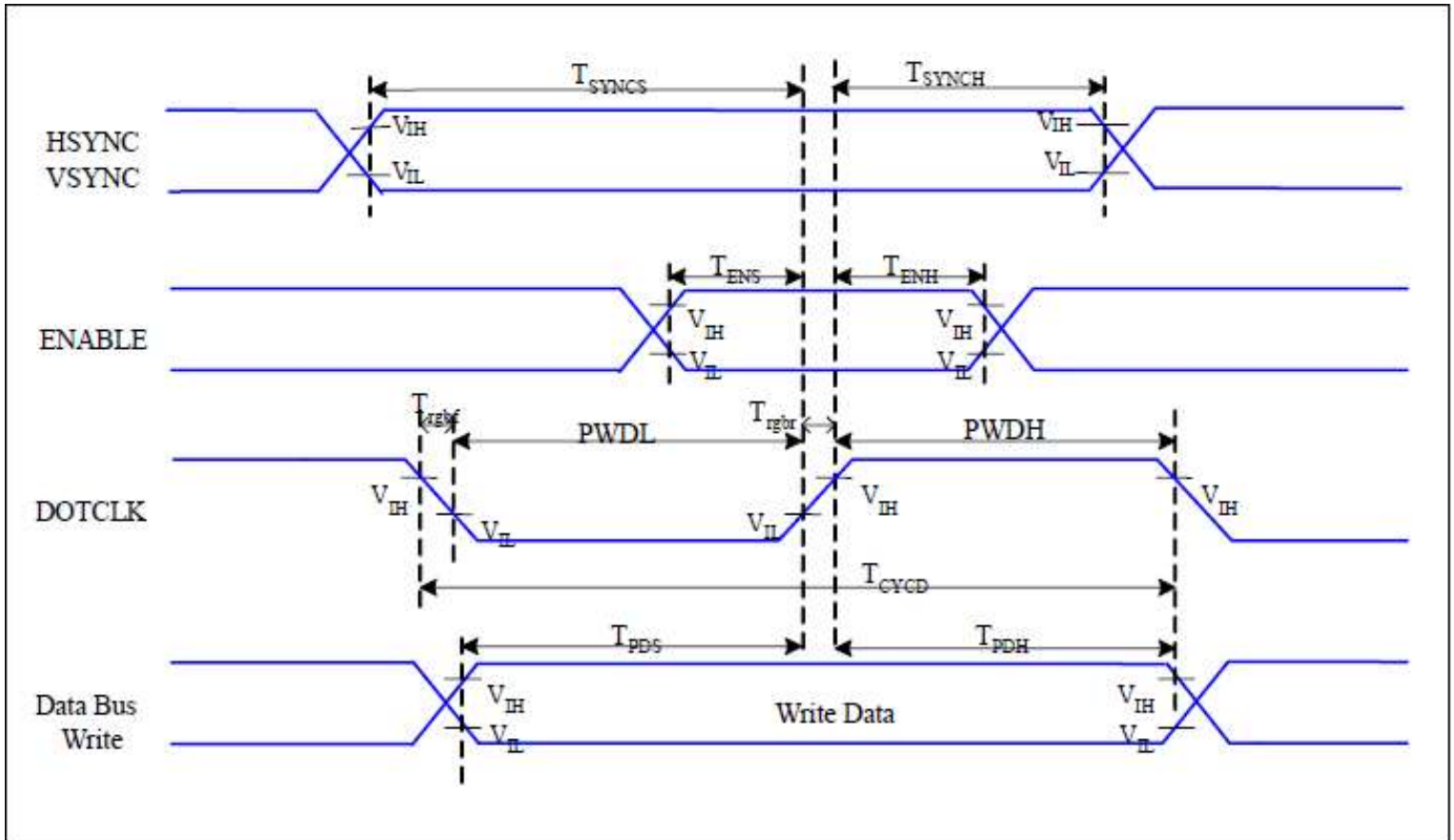


VDDI=1.8, VDD=2.8, AGND=DGND=0V, Ta=25 °C

Signal	Symbol	Parameter	Min	Max	Unit	Description
CSX	T <sub>CSS</sub>	Chip select setup time (write)	15		ns	
	T <sub>CSH</sub>	Chip select hold time (write)	15		ns	
	T <sub>CSS</sub>	Chip select setup time (read)	60		ns	
	T <sub>SCC</sub>	Chip select hold time (read)	60		ns	
	T <sub>CHW</sub>	Chip select "H" pulse width	40		ns	
SCL	T <sub>SCYCW</sub>	Serial clock cycle (Write)	66		ns	
	T <sub>SHW</sub>	SCL "H" pulse width (Write)	15		ns	
	T <sub>SLW</sub>	SCL "L" pulse width (Write)	15		ns	
	T <sub>SCYCR</sub>	Serial clock cycle (Read)	150		ns	
	T <sub>SHR</sub>	SCL "H" pulse width (Read)	60		ns	
	T <sub>SLR</sub>	SCL "L" pulse width (Read)	60		ns	
SDA (DIN)	T <sub>SDS</sub>	Data setup time	10		ns	
	T <sub>SDH</sub>	Data hold time	10		ns	

Note : The rising time and falling time (Tr, Tf) of input signal are specified at 15 ns or less. Logic high and low levels are specified as 30% and 70% of VDDI for Input signals.

5.2.2 RGB Interface Characteristics:

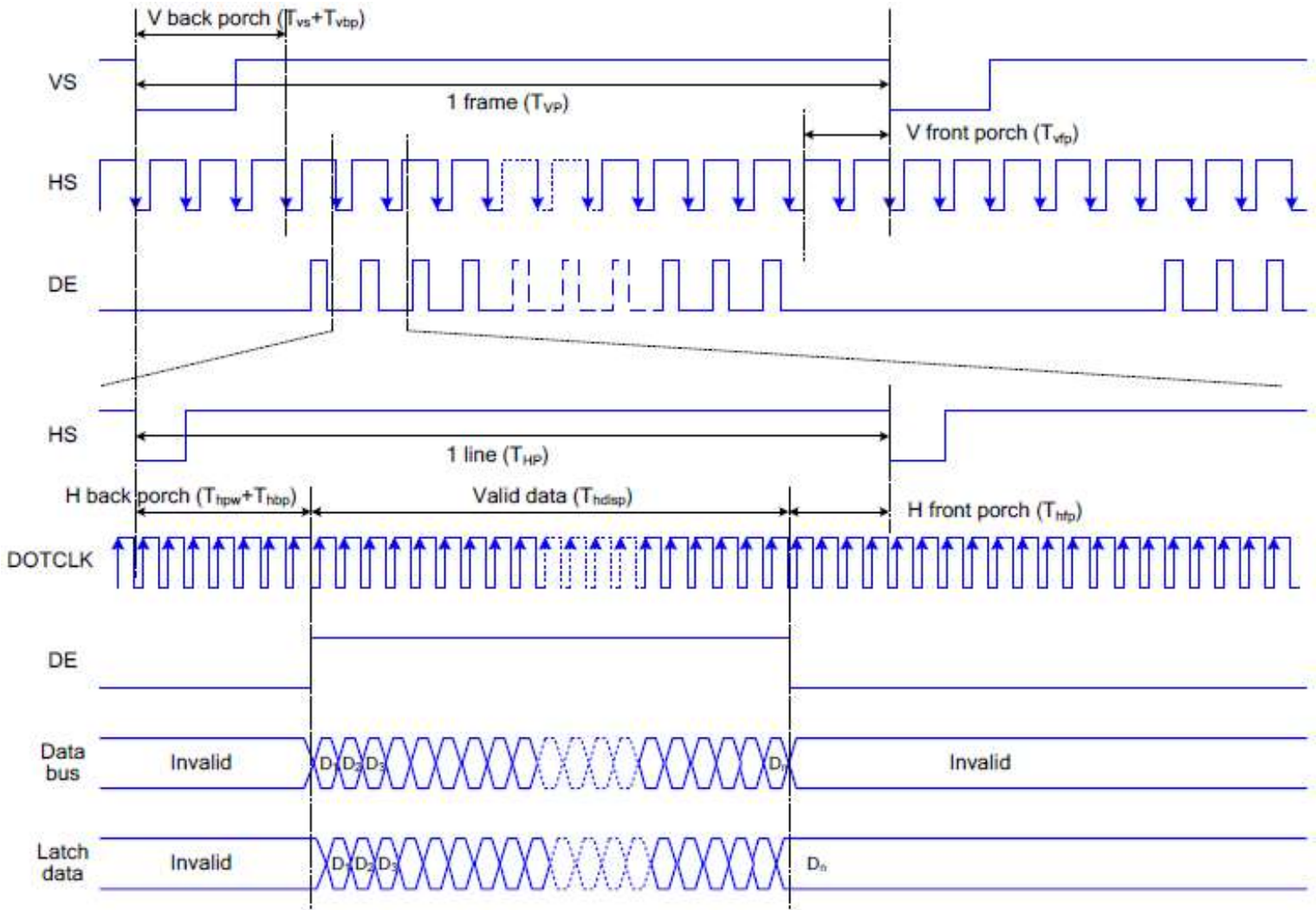


$V_{DDI}=1.8, V_{DD}=2.8, AGND=DGND=0V, T_a=25\text{ }^{\circ}\text{C}$

Signal	Symbol	Parameter	MIN	MAX	Unit	Description
HSYNC, VSYNC	$T_{SYNCS}$	VSYNC, HSYNC Setup Time	5	-	ns	
ENABLE	$T_{ENS}$	Enable Setup Time	5	-	ns	
	$T_{ENH}$	Enable Hold Time	5	-	ns	
DOTCLK	PWDH	DOTCLK High-level Pulse Width	15	-	ns	
	PWDL	DOTCLK Low-level Pulse Width	15	-	ns	
	$T_{CYCD}$	DOTCLK Cycle Time	33	-	ns	
	Trghr, Trghf	DOTCLK Rise/Fall time	-	15	ns	
DB	$T_{PDS}$	PD Data Setup Time	5	-	ns	
	$T_{PDH}$	PD Data Hold Time	5	-	ns	

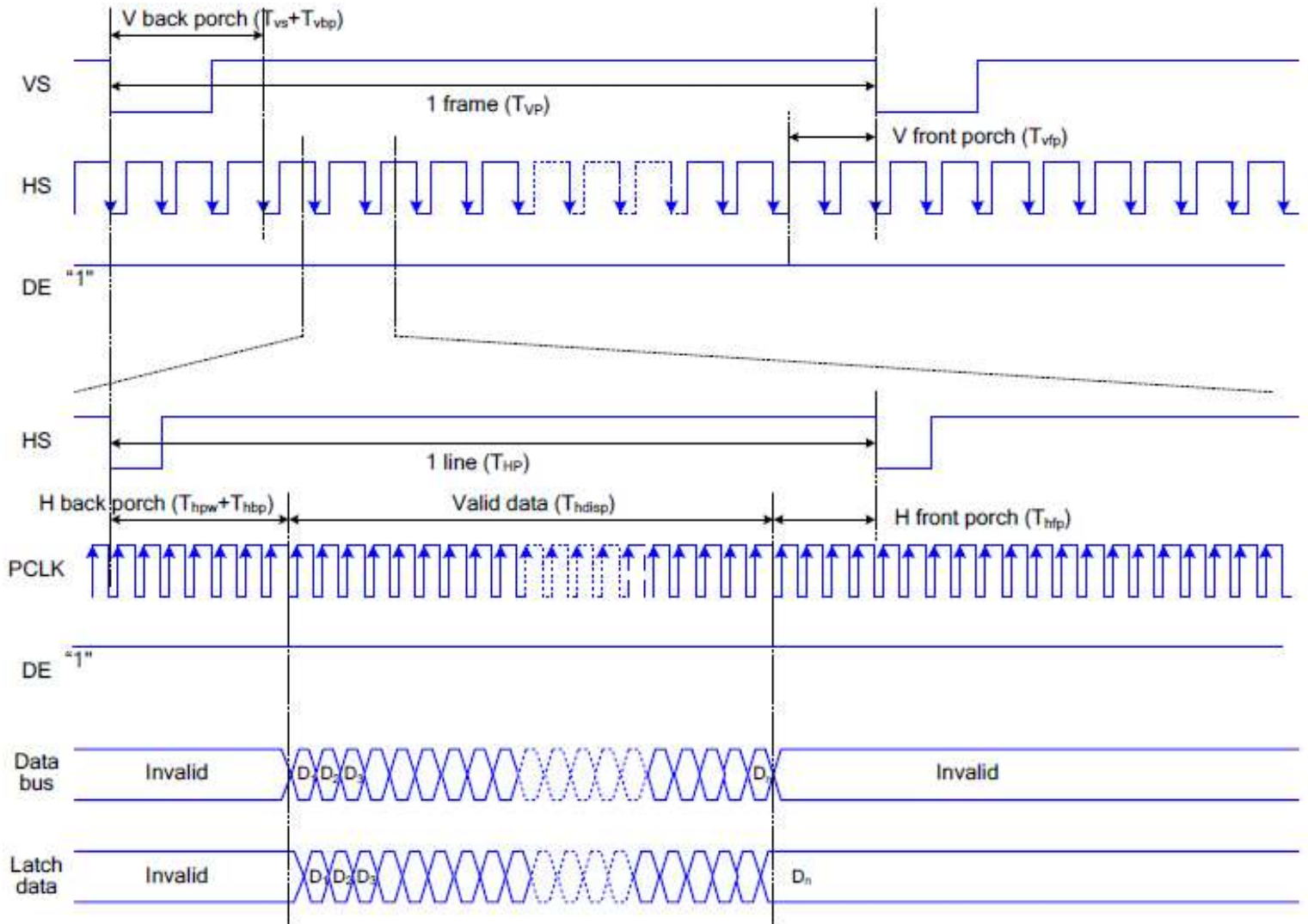
### 5.3 RGB Interface Timing:

The timing chart of RGB interface DE mode is shown as follows.



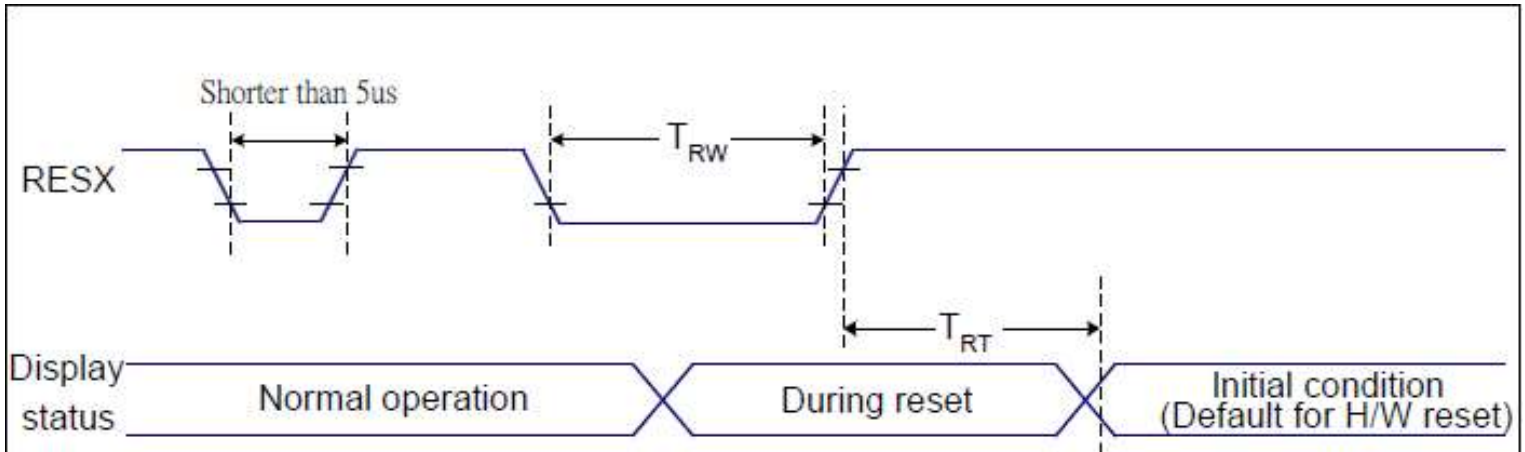
*Note: The setting of front porch and back porch in host must match that in IC as this mode.*

The timing chart of RGB interface HV mode is shown as follows.





**5.4 Reset Timing:**



VDDI=1.8, VDD=2.8, AGND=DGND=0V, Ta=25 °C

Related Pins	Symbol	Parameter	MIN	MAX	Unit
RESX	TRW	Reset pulse duration	10	-	us
	TRT	Reset cancel	-	5 (Note 1, 5)	ms
			-	120 (Note 1, 6, 7)	ms

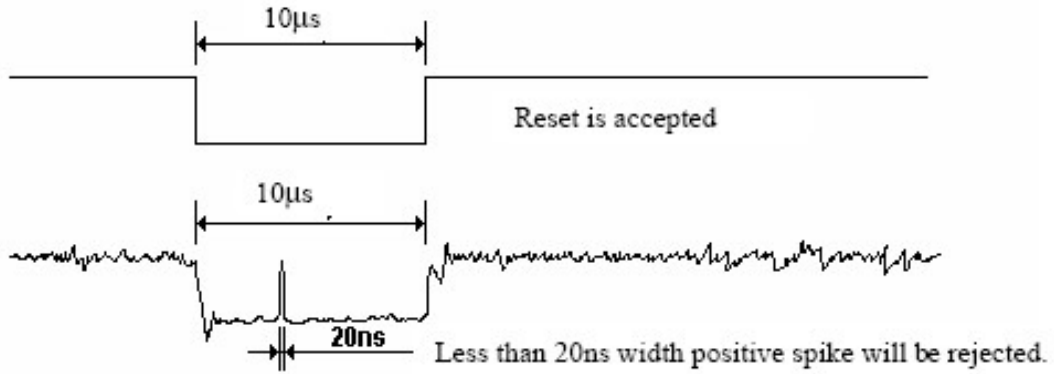
**Notes:**

- The reset cancel includes also required time for loading ID bytes, VCOM setting and other settings from NVM (or similar device) to registers. This loading is done every time when there is HW reset cancel time ( $t_{RT}$ ) within 5 ms after a rising edge of RESX.
- Spike due to an electrostatic discharge on RESX line does not cause irregular system reset according to the table below:

RESX Pulse	Action
Shorter than 5us	Reset Rejected
Longer than 9us	Reset
Between 5us and 9us	Reset starts

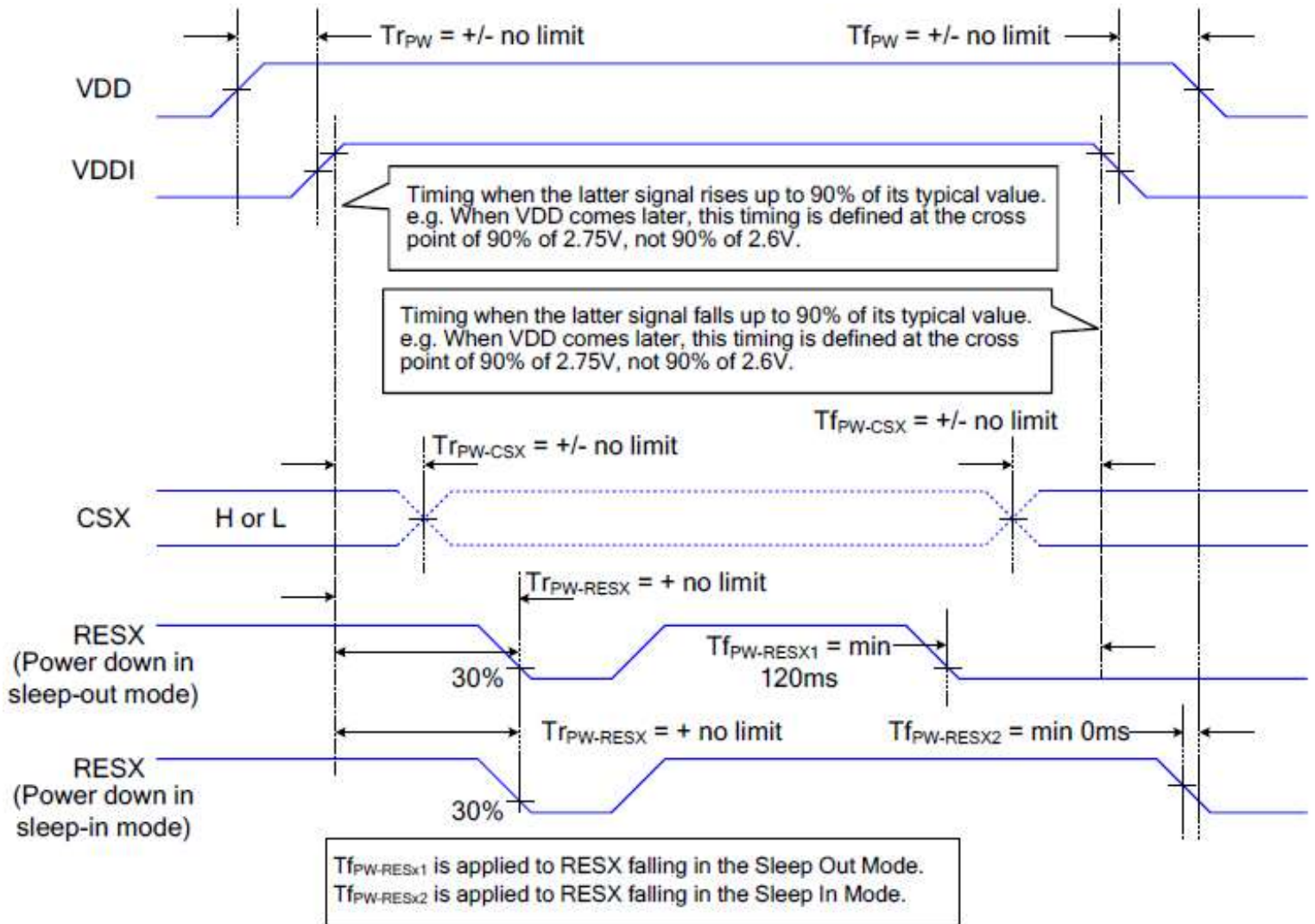
3. During the Resetting period, the display will be blanked (The display is entering blanking sequence, which maximum time is 120 ms, when Reset Starts in Sleep Out –mode. The display remains the blank state in Sleep In –mode.) and then return to Default condition for Hardware Reset.

4. Spike Rejection also applies during a valid reset pulse as shown below:



5. When Reset applied during Sleep In Mode.
6. When Reset applied during Sleep Out Mode.
7. It is necessary to wait 5msec after releasing RESX before sending commands. Also Sleep Out command cannot be sent for 120msec.

### 5.5 Power On/Off Sequence



## 6.0 OPTICAL SPECIFICATIONS

### 6.1 Overview

The test of optical specifications shall be measured in a dark room (ambient luminance  $\leq 1$ lux and temperature =  $25 \pm 2^\circ\text{C}$ ) with the equipment of Luminance meter system (Goniometer system and TOPCON BM-5) and test unit shall be located at an approximate distance 50cm from the LCD surface at a viewing angle of  $\theta$  and  $\phi$  equal to  $0^\circ$ . We refer to  $\theta=0$  ( $=\theta_3$ ) as the 3 o'clock direction (the "right"),  $\theta=90$  ( $=\theta_{12}$ ) as the 12 o'clock direction ("upward"),  $\theta=180$  ( $=\theta_9$ ) as the 9 o'clock direction ("left") and  $\theta=270$  ( $=\theta_6$ ) as the 6 o'clock direction ("bottom"). While scanning  $\theta$  and/or  $\phi$ , the center of the measuring spot on the display surface shall stay fixed.

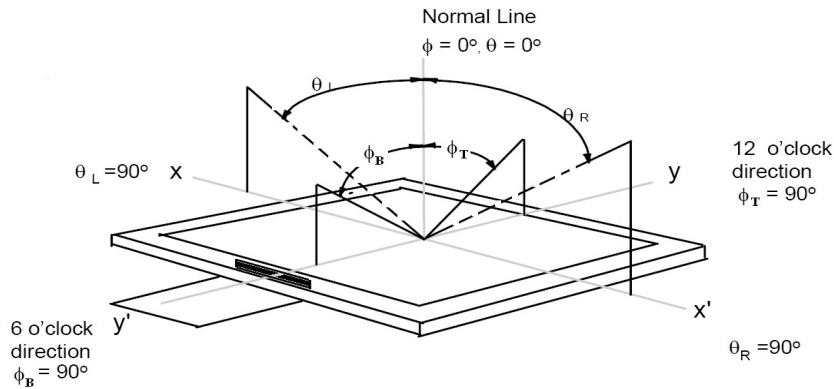
### 6.2 Optical Specifications

Item	Symbol	Condition	Min	Typ.	Max	Unit	Note
Viewing Angle	$\theta_L$	$Cr \geq 10$	80	85	-	deg	<u>Note 1</u>
	$\theta_R$		80	85	-		
	$\psi_T$		80	85	-		
	$\psi_B$		80	85	-		
Contrast Ratio	Cr	$\theta=0^\circ$	1000	1500	-	-	<u>Note 2</u>
Response Time	$Tr+Tf$	$FF=0^\circ$	--	30	40	ms	<u>Note 3</u>
Color Coordinate of CIE1931	$W_x$	$\theta=0^\circ$	0.042	0.272	0.302	-	<u>Note 4</u>
	$W_y$		0.255	0.285	0.315		
	$R_x$		0.590	0.620	0.650		
	$R_y$		0.294	0.324	0.354		
	$G_x$		0.271	0.301	0.331		
	$G_y$		0.537	0.567	0.597		
	$B_x$		0.117	0.147	0.177		
	$B_y$		0.033	0.063	0.093		
Uniformity	U		80	--	--	%	<u>Note 5</u>
Color Gamut			60	65	--	%	
Luminance	L		300	350	--	cd/m <sup>2</sup>	<u>Note 6</u>



**Note 1: The definition of Viewing Angle**

Refer to the graph below marked by  $\theta$  and  $\phi$ .



**Note 2: The definition of Contrast Ratio**

$$\text{Contrast Ratio (CR)} = \frac{\text{Luminance When LCD is at "White" state}}{\text{Luminance When LCD is at "Black" state}}$$

(Contrast Ratio is measured in optimum common electrode voltage)

**Note 3: Definition of Response time.** (Test LCD using RD80S or similar equipments):

The output sign also photo detector are measured when the input sign also are changed from "black" to "white" (Voltage falling time) and from "white" to "black" (Voltage rising time), respectively. The response time is defined as the time interval between the 10% and 90% of amplitudes. Refer to figures below.

**Note 4: Color Coordinates of CIE 1931**

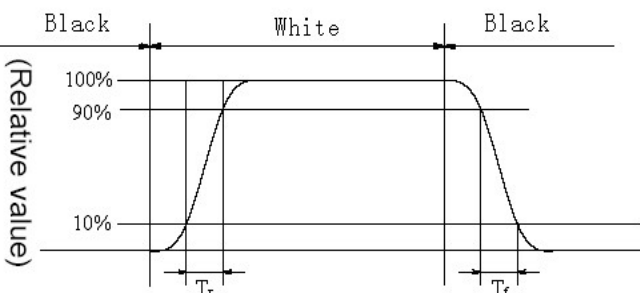
The test condition is at ILED=20mA and measured on the surface of LCD module at 25°C.

Measurement equipment: CS2000 or similar equipments

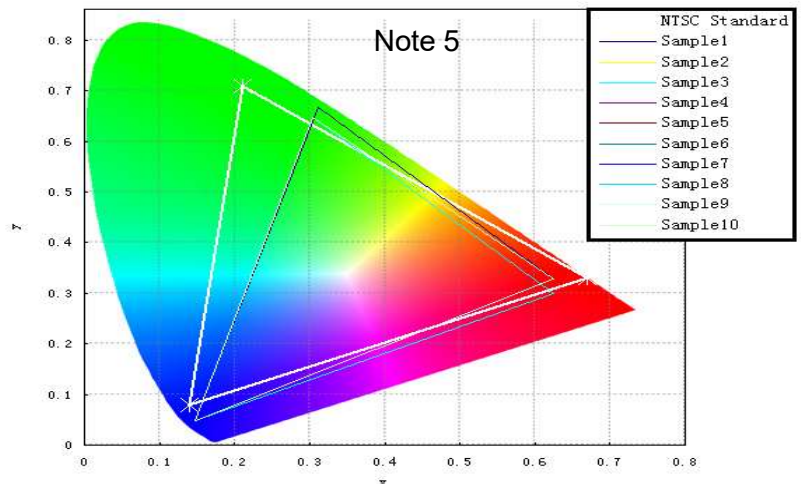
The Color Coordinate (CIE 1931) is the measurement of the center of the display shown in below figure.

**Note 5: Definition of Color of CIE Coordinate and NTSC Ratio.**

$$S = \frac{\text{area of RGB triangle}}{\text{area of NTSC triangle}} \times 100\%$$



Note 3




## 7.0 RELIABILITY TEST

The Reliability test items and its conditions are shown in below.

No	Test Items	Conditions	Testing standard
1	High temperature storage Test	Ta=+80°C, 240 hours	IEC60068-2-1:2007 GB2423.2-2008
2	Low temperature storage Test	Ta=-30°C, 240 hours	IEC60068-2-1:2007 GB2423.1-2008
3	High temperature operation Test	Ta=+70°C, 240 hours	IEC60068-2-1:2007 GB2423.2-2008
4	Low temperature operation Test	Ta=-20°C, 240 hours	IEC60068-2-1:2007 GB2423.1-2008
5	High temperature & humidity (storage Test)	Ta=+60°C, 90%RH max, 240 hours	IEC60068-2-78:2001 GB/T2423.3-2006
6	Thermal shock Test	-30°C 30min~80°C 30min, Change time:5min 20cycle	Start with cold temperature End with high temperature IEC60068-2-14:1984,GB2423.22-2002
7	Vibration Test	Frequency range:10Hz-55Hz Stroke:1.5mm Sweep:10Hz~55Hz~10Hz 2 hours for each direction of X.Y.Z (6 hours for total)	IEC60068-2-6 GB/T17626.2
8	Mechanical shock	Half Sine Wave 100G 6ms,+X,+Y,+Z 3times for each direction	IEC60068-2-27 GB/T2423.5
9	Dropping Test	Height: 60 cm, 1 corner, 3 edges, 6 surfaces	IEC60068-2-32:1990 GB/T2423.8-1995
10	ESD Test	C=150pF, R=330 Ω, 5 points/panel Air:±8KV, 5 times; Contact: ±4KV, 5times; (Environment:15°C~35°C, 30%~60%RH,86Kpa a~106Kpa)	IEC61000-4-2:2001 GB/T17626.2-2006 Class C

Notes:

- 1、 Maximum acceleration 20g, 1g=9.8m/s<sup>2</sup>
- 2、 Maximum amplitude 5mm
- 3、 Maximum acceleration =0.002 x F<sup>2</sup> (frequency Hz) x D (amplitude p-pmm)


<b>PRODUCT GROUP</b>	REV	ISSUE DATE	
TFT- LCM PRODUCT	V0	2023-04-28	
SPEC. NUMBER AM-0399001A	SPEC. TITLE FN0399D001A Product Specification		PAGE 19 OF 26

- **8.0 Precautions**

- Please pay attention to the followings when you use this TFT LCD Panel.

- **8.1 Mounting Precautions**

- (1) Use fingerstalls with soft gloves in order to keep display clean during the incoming inspection and assembly process.
- (2) You must mount a module using specified mounting holes (Details refer to the drawings).
- (3) Please make sure to avoid external forces applied to the Source PCB or FPC and D-IC during the process of handling or assembling. If not, It causes panel damage or malfunction.
- (4) Note that polarizers are very fragile and could be easily damaged. Do not touch, push or rub the exposed polarizers with glass, tweezers or anything harder than HB pencil lead. And please do not rub with dust clothes with chemical treatment.
- (5) Do not pull or fold the source D-IC which connect the source PCB or FPC and the panel.
- Do not pull or fold the LED wire.
- (6) After removing the protective film, when the surface becomes dusty, please wipe gently with absorbent cotton or other soft materials like chamois soaks with alcohol or purified water.
- Do not strong polar solvent because they cause chemical damage to the polarizer.
- (7) Wipe off saliva or water drops as soon as possible. Their long time contact with polarizer causes deformations and color fading.
- (8) Protection film for polarizer on the module shall be slowly peeled off just before use so that the electrostatic charge can be minimized.
- (9) Since the LCD is made of glass, do not apply strong mechanical impact or static load onto it. Handling with care since shock, vibration, and careless handling may seriously affect the product. If it falls from a high place or receives a strong shock, the glass may be broken.
- (10) Do not disassemble the module.
- (11) To determine the optimum mounting angle, refer to the viewing angle range in the specification for each model.
- (12) If the customer's set presses the main parts of the LCD, the LCD may show the abnormal display. But this phenomenon does not mean the malfunction of the LCD and should be pressed by the way of mutual agreement.
- (13) Do not drop water or any chemicals onto the LCD's surface.

<b>PRODUCT GROUP</b>	REV	ISSUE DATE	
TFT- LCM PRODUCT	V0	2023-04-28	
SPEC. NUMBER AM-0399001A	SPEC. TITLE FN0399D001A Product Specification		PAGE 20 OF 26

## 8.2 Operating Precautions

- (1) Be careful for condensation at sudden temperature change. Condensation makes damage to polarizer or electrical contacted parts. And after fading condensation, smear or spot will occur.
- (2) Module has high frequency circuits. Sufficient suppression to the electromagnetic interference shall be done by system manufacturers. Grounding and shielding methods may be important to minimized the interference.
- (3) The electrochemical reaction caused by DC voltage will lead to LCD degradation, so DC drive should be avoided.
- (4) The LCD modules use C-MOS LSI drivers, so customers are recommended that any unused input terminal would be connected to Vdd or Vss, do not input any signals before power is turn on, and ground you body, work/assembly area, assembly equipments to protect against static electricity.
- (5) Do not exceed the absolute maximum rating value. (supply voltage variation, input voltage variation, variation in part contents and environmental temperature, and so on) Otherwise the Module may be damaged.
- (6) Design the length of cable to connect between the connector for back-light and the converter as short as possible and the shorter cable shall be connected directly.  
The longer cable between that of back-light and that of converter may cause the luminance of LED to lower and need a higher startup voltage(Vs).
- (7) Connectors are precise devices for connecting PCB and transmitting electrical signals. Operators should insert and unplug MDL in parallel when assembling MDL.
- (8) Do not connect or disconnect the cable to/ from the module at the "Power On" condition.
- (9) When the module is operating, do not lose CLK, ENAB signals. If any one these signals is lost, the LCD panel would be damaged.
- (10) Obey the supply voltage sequence. If wrong sequence is applied, the module would be damaged.
- (11) Do not re-adjust variable resistor or switch etc.
- (12) For the Q/Single/OC Product, If the LED designed side view, LED bar should be putted in the Long/short side ; Otherwise, its reliability and function may not be guaranteed.

注：  
 ①(1)涉及到Pol相关条目适用于OC/MDL出货产品，  
 ②(6)(7)涉及到connector相关适用于OC/MDL出货产品  
 ③ (12) 涉及到客户进行BLU设计， LED Bar位置需要避开GOA位置；

## 8.3 Electrostatic Discharge Control

- (1) Since a module is composed of electronic circuits, it is not strong to electrostatic discharge. Make certain that treatment persons are connected to ground through wrist band etc. And don't touch interface pin directly. Keep products as far away from static electricity as possible.
- (2) Avoid the use work clothing made of synthetic fibers. We recommend cotton clothing or other conductivity-treated fibers.

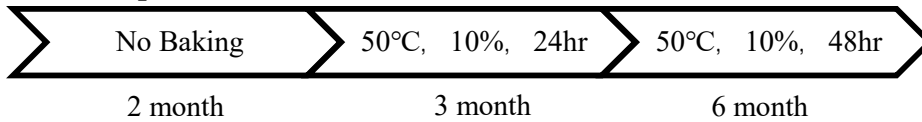
### 8.4 Precautions for Strong Light Exposure

It is not allowed to store or run directly in strong light or in high temperature and humidity for a long time; Strong light exposure causes degradation of polarizer and color filter.

### 8.5 Storage Precautions

When storing modules as spares for a long time, the following precautions are necessary.

- (1) The polarizer surface should not come in contact with any other object.  
It is recommended that they be stored in the container in which they were shipped.  
Temperature : 5 ~ 40 °C
- (2) Humidity : 35 ~ 75 %RH
- (3) Period : 6 months
- (4) Control of ventilation and temperature is necessary.
- (5) Please make sure to protect the product from strong light exposure, water or moisture.  
Be careful for condensation.
- (6) Store in a polyethylene bag with sealed so as not to enter fresh air outside in it.
- (7) Do not store the LCD near organic solvents or corrosive gasses.
- (8) Please keep the Modules/OC/FOG at a circumstance shown below Fig.




### 8.6 Precautions for Protection Film

- (1) Remove the protective film slowly, keeping the removing direction approximate 30-degree not vertical from panel surface, If possible, under ESD control device like ion blower, and the humidity of working room should be kept over 50%RH to reduce the risk of static charge.
- (2) In handling the LCD, wear non-charged material gloves. And the conducting wrist to the earth and the conducting shoes to the earth are necessary.

### 8.7 Appropriate Condition for Display

- (1) Normal operating condition
  - Temperature: 0 ~ 40°C
  - Operating Ambient Humidity : 10 ~ 90 %
  - Display pattern: dynamic pattern (Real display)
  - Suitable operating time: under 12 hours a day.
- (2) Special operating condition  
If the product will be used in extreme conditions such as high temperature, humidity, display patterns or 7\*24hrs operation time etc., It is strongly recommended to contact us for Application engineering advice. Otherwise, its reliability and function may not be guaranteed.
- (3) Black image or moving image is strongly recommended as a screen save.

<b>PRODUCT GROUP</b>	REV	ISSUE DATE	
TFT- LCM PRODUCT	V0	2023-04-28	
SPEC. NUMBER	SPEC. TITLE		PAGE
AM-0399001A	FN0399D001A Product Specification		22 OF 26

- (4) Lifetime in this spec. is guaranteed only when commercial display is used according to operating usages.
- (5) Please contact us in advance when you display the same pattern for a long time.
- (6) If the Module keeps displaying the same pattern for a long period of time, the image may be “sticked“ or “turn off” to the screen. To avoid image sticking, it is recommended to use a screen saver.
- (7) Do not exceed the absolute maximum rating value. (supply voltage variation, input voltage variation, variation in part contents and environmental temperature, and so on) Otherwise the Module may be damaged.
- (8) Dew drop atmosphere should be avoided.
- (9) The storage room should be equipped with a good ventilation facility and avoid to expose to corrosive gas , which has a temperature controlling system.
- (10) The LCD should be avoided to expose to corrosive gas for long time, ,the LCD may be affected by the gas as SO<sub>2</sub> ,H<sub>2</sub>S etc.
- (11) When expose to drastic fluctuation of temperature (hot to cold or cold to hot) ,the LCD may be affected; Specifically, drastic temperature fluctuation from cold to hot ,produces dew on the LCD's surface which may affect the operation of the polarizer and the LCD.
- (12) Response time will be extremely delayed at lower temperature than the operating temperature range and on the other hand at higher temperature LCD may turn black at temperature above its operational range. However those phenomena do not mean malfunction or out of order with the LCD. The LCD will revert to normal operation once the temperature returns to the recommended temperature range for normal operation

## 8.8 Others

### A. LC Leak

- If the liquid crystal material leaks from the panel, it is recommended to wash the LC with acetone or ethanol and then burn it.
- In case of contact with hands, skin or clothes, it has to be washed away thoroughly with soap.
- If LC in mouth, mouth need to be washed, drink plenty of water to induce vomiting and follow medical advice.
- If LC touch eyes, eyes need to be washed with running water at least 15 minutes.

### B. Rework

- When returning the module for repair or etc., Please pack the module not to be broken. We recommend to use the original shipping packages.

- C. In order to prevent potential problems, flicker should be adjusted by optimizing the Vcom value in customer LCM Line (适用于Q/Single/OC出货产品)



PRODUCT GROUP

REV

ISSUE DATE



TFT- LCM PRODUCT

V0

2023-04-28

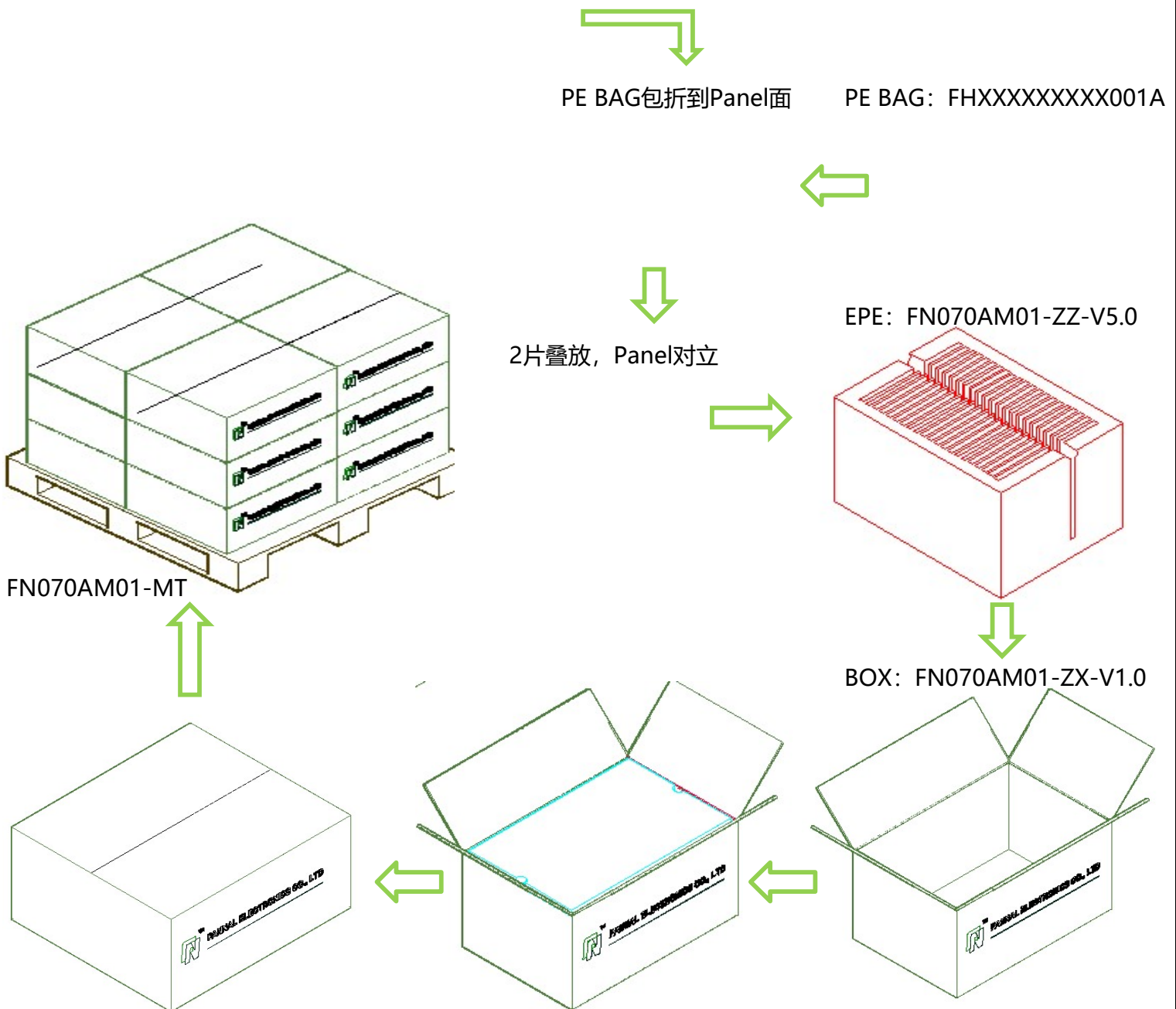
SPEC. NUMBER  
AM-0399001A

SPEC. TITLE  
FN0399D001A Product Specification

PAGE  
23 OF 26

### 9.0 PACKING INFORMATION

LCM MODEL	LCM Qty. in the Box	Carton Size(mm)	LCM Qty. in the Pallet
TBD			



## 10.0 VISUAL INSPECTION CRITERIA FOR ALL CUSTOMERS

### 10.1 Sampling Method

Unless otherwise agreed upon in writing, the sampling inspection shall be applied to the Customers incoming inspection.

- 10.1.1 Lot size : 1 pallet per same model
- 10.1.2 Sampling type : Random sampling
- 10.1.3 Inspection level : II
- 10.1.4 Sampling table : MIL-STD-105E

### 10.2 Inspection Environment

#### 10.2.1 Ambient conditions

- a. Ambient Temperature:  $25 \pm 3^{\circ}\text{C}$
- b. Relative Humidity:  $65 \pm 20\% \text{RH}$
- c. Ambient Illumination: 300-700LUX (Normal: 500LUX)

#### 10.2.2 Viewing Distance

The distance between the LCM and the inspector's eyes shall be at least 30cm-50cm

#### 10.2.3 Viewing Angle

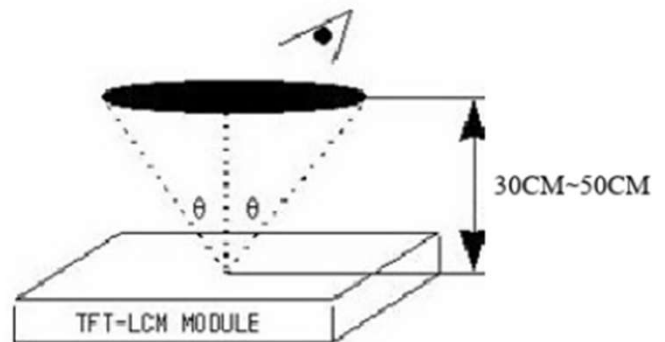
performing in front of the panel

[Vertical] :  $\pm 25^{\circ}$

[Horizontal] :  $\pm 40^{\circ}$

#### 10.2.4 Inspection Area:

Display Area (Active Area)



### 10.3 Definitions

#### 10.3.1 Dark / Bright Spots

Points on display which appear dark/bright and usually result from the contamination.

These defects do not vary in size or intensity (contrast) when contrast is varied.

#### 10.3.2 Dark / Bright Lines

Lines on display which appear dark/bright and usually result from the contamination.

#### 10.3.3 Polarizer Scratch

Lines on display which are seen across a darker background and do not vary in size.


#### 10.3.4 Polarizer Dent

White spots on display which appear against a darker background and do not vary in size.

#### 10.3.5 Bright Dot Defects

Dots (sub-pixels) on display which appear bright in the display area and visible through the 5%ND filter at Black Pattern.



<b>PRODUCT GROUP</b>		REV	ISSUE DATE	
TFT- LCM PRODUCT		V0	2023-04-28	
SPEC. NUMBER	SPEC. TITLE			PAGE
AM-0399001A	FN0399D001A Product Specification			25 OF 26

**10.3.6 Dark Dot Defects**

Dots(sub-pixels)on display which appear dark in the display area at R.G.B Color Pattern.

**10.3.7 Line Defects**

All line defects on display which appear brigh/dark such as vertical,horizontal,or cross lines.

**10.3.8 Mura**

Mura on display which appears darker/brighter against background birghtness on parts of display area.

**10.3.9 BM Defects**

Bright(white)Points on display which are off BM(Black Matrix).

**10.3.10 Visual Inspection**

Inspection for LCM when the unit turns on.

**10.3.11 Appearance Inspection**

External inspection for LCM when the unit turns off.

**10.3.12 Other**

Defects which cannot be classified into the above defect definitions.

Note 1: Bright& Dark dots are not smaller than a sub-pixel(Dots smaller than a sub-pixel are not counted as defect dots)

**10.4 Inspectin Criteria**

Refer to 《TFT LCM general inspection standard》

**10.5 Verification**

The supplier can verify the defective LCMs to segregate the responsibilities at customer's facility or can request the Customer to ship the defective LCMs to assigned place for verification


This verificatin result shall be agreed mutually buy the Customer and Supplier. This result can be corrected/changed after detail failure analysis at Supplier's facilities.

**10.6 Supplier Induced Defects**

All of the Supplier induced defective LCMs shall be returned to the Supplier for repair or replacement.

Bfore return the defective LCMs, the Customer needs Supplier's confirmatin with RMA Number.

All of the returned LCMs shall be returned to the Customer within agreed time period.

<b>PRODUCT GROUP</b>	REV	ISSUE DATE	
TFT- LCM PRODUCT	V0	2023-04-28	
SPEC. NUMBER AM-0399001A	SPEC. TITLE FN0399D001A Product Specification		PAGE 26 OF 26

**10.7 Customer Induced Defects**

The Customer can return the customer induced defective LCMs to the Supplier for repair. The repair cost for Customer induced defective LCMs shall be agreed with both parties, Customer and Supplier.

**10.8 Warranty Period**

In-warranty period is Eighteen(18)Months from manufacturing month of LCM

Note :

- a. Eighteen months are composed of twelfth months in-warranty period and sixth months distribution period
- b. The manufacturing Month is on the LCMs as Supplier's serial No.

**10.9 Repair Warranty**

Repair warranty is Twelve(12)Months from repaired month for repaired LCMs

Note : a. The Label for repair will be added after repairing.

**10.10 Warranty avoidance**

The warranty will be avoided in cases of below:

- a. When the warranty period is expired.
- b. The Customer induced defective LCMs.
- c. When the LCMs were repaired by 3rd party without Supplier's approval.
- d. When the LCMs were treated like Disassemble and Rework by the Customer and/or Customer's representatives without Supplier's approval.

**10.11 Others**

If any problems arise with the LCMs supplied by supplier, the customer and supplier will cooperate and make efforts to solve it with mutual confidence and respect