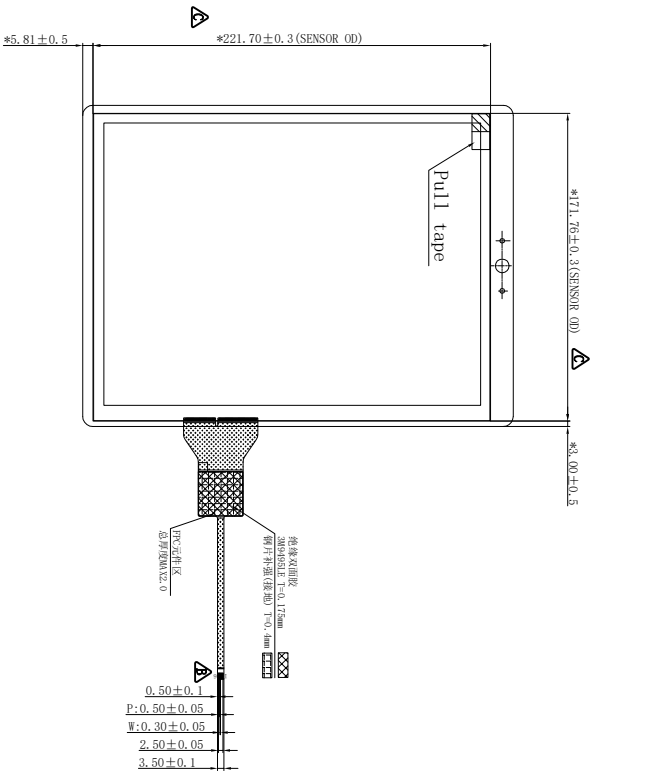
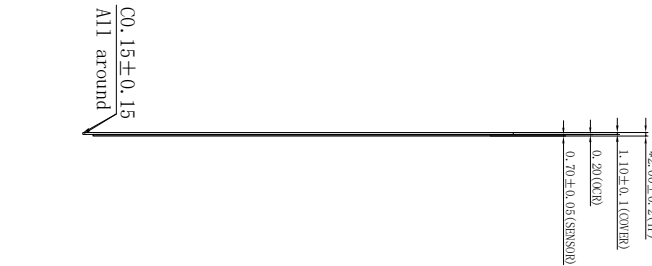
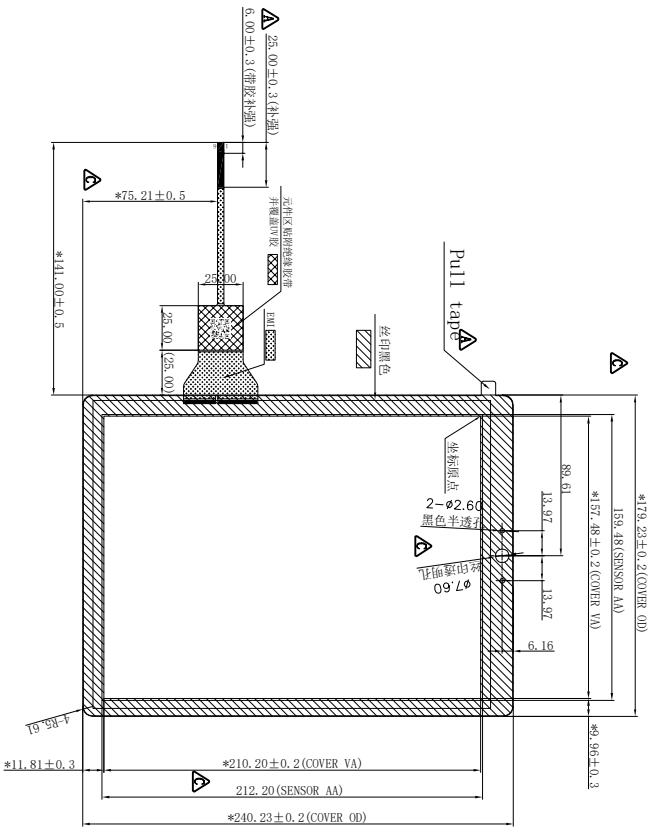


Rev.	Description	Date
A001	The initial drawing	2021.07.23
A002	更改位置标注位置、定位位置、尺寸及印刷面尺寸	2021.07.23
A003	更新尺寸标注及文字	2021.07.23
A	尺寸修改、印刷面更新	2021.07.26
B001	更新颜色、增加传感器材料	2021.08.05
B	尺寸修改、印刷面更新	2021.08.05



Front view

Side view

Back view

TP Interface

Pin No.	Definition
1	GND
2	SCL
3	VDD 3.3V
4	SDA
5	INT
6	RST

TECHNOLOGY CHARACTERISTICS CTP

Property	Requirement
Structure	G+G
Bonding Type	-
Touch IC	msTT1065TD
No. of Touch	10
Cover Lens Thickness	1.1mm (Generally in standard)
ITO Glass Thickness	0.70mm
Surface Hardness	≥6H
Light Transmittance	85% Min
Operating Temperature	-20~70°C
Storage Temperature	-30~85°C

Important dimensions:
General tolerance:±0.3,
Dimensions in angular:±1°.

Unless specifically stated otherwise, inspection will be carried out in accordance with Fannal's 'FN-WI-PZ-56-AZ TPE&TPM Appearance Inspection Specification' and later versions.

		TITLE Touch Panel	
3rd Angle	Drawing	Part NO.	PN104MRK300068
Check	Yan/2021.08.05	Project Name	TP-RPQ-202107-015
CSR Approve	Hong/2021.08.05	Customer NO	
Unit	mm	Revision	B
Scale	1:1	Sheet	1 of 1